

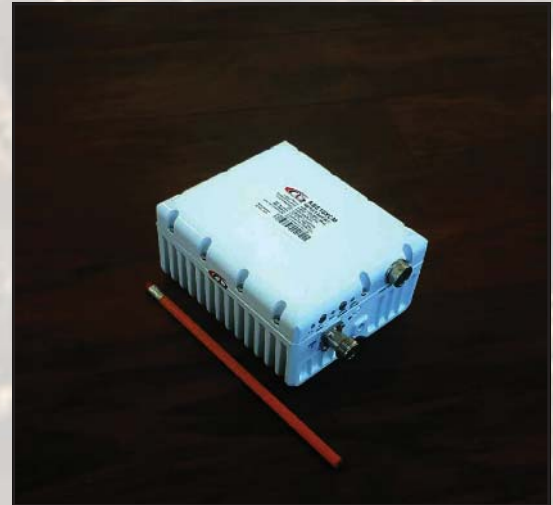


10W Ext. Ku-Band Block Up Converter

KEY FEATURES

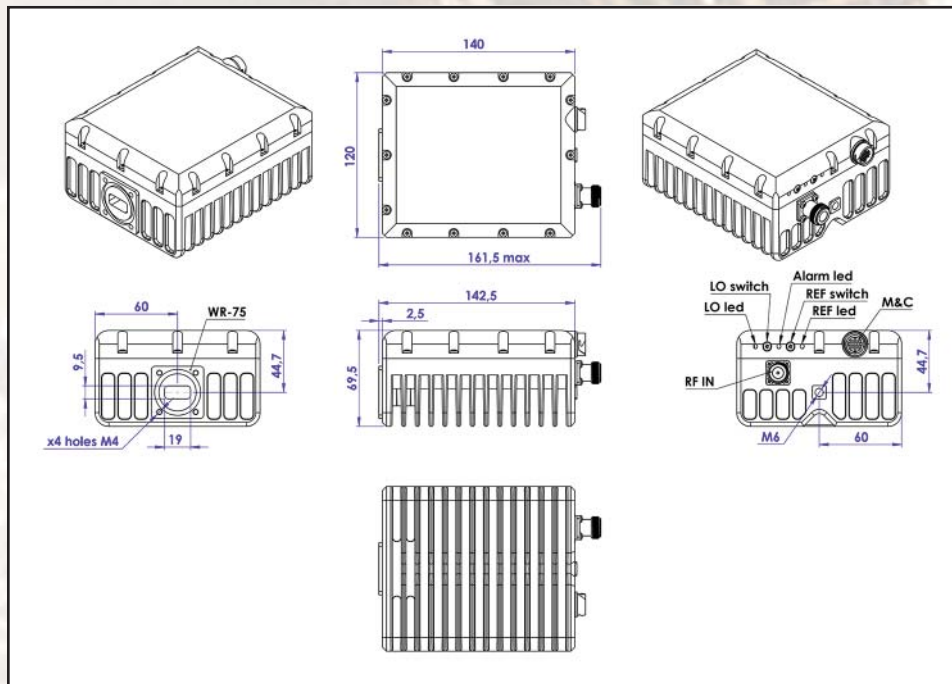
- ◆ Output frequency 13.75 - 14.50 GHz
- ◆ Based on GaN technology which enables high efficiency, low power consumption and high reliability.
- ◆ Double- L.O. (switchable 12.80 & 13.05 GHz)
- ◆ Incomparable low power consumption (49W max)
- ◆ Advanced M&C interface - combined RS-232/485, Ethernet (HTTP and SNMP ver. 3) and optional FSK
- ◆ Auto-ranging 15-60 VDC powering option
- ◆ Digital temperature compensation
- ◆ Power and lock status LED
- ◆ Built-in redundancy option
- ◆ Field-exchangeable (F/N) IF connector
- ◆ Internal 10MHz high stability reference (optional)
- ◆ RoHS compliant

ABE10KXHM / ABE10KXHMF



This smallest and lightest 10W L-To Ku-Band Block Up Converter is based on GaN technology. Double L.O. and field- Exchangeable connector make unit universal for any Ku-Band application. Incomparable low power consumption allows the BUC to be powered by iDirect and similar modems. Internal 10MHz reference option enables using the BUC with the modems without 10MHz reference.

Mechanical Drawing





10W Ext. Ku-Band Block Up Converter

TECHNICAL SPECIFICATIONS	
RF frequency	13.75 - 14.50 GHz
Dual local oscillator	12.80 and 13.05 GHz
IF frequency	950 to 1,700 MHz
Output power	10W (+40 dBm min.)
IF connector	N-type or F-type (field-exchangeable)
Power supply : auto-ranging via IF connector	+15 VDC ~ +60 VDC, 49W max.
Output interface	WR 75 G
Gain	62 dB nominal
IMD3 (two tones)	-26 dBc max. 2 signal 5 MHz apart at P-LINEAR
L.O. leakage	-45 dBm max
Spurious	-50 dBc max
Spectral regrowth (QPSK at 1.5x and OQPSK at 1.0x symbol rate offset with 2dB back-off from rated output power)	-30 dBc
Requirement for external reference: frequency input power	via IF cable 10 MHz (sine-wave) -5 to +5 dBm @ input port
TX Gain variation	± 0.5 dB over 40 MHz
TX Gain stability over temperature range	± 1.8 dB over full band ± 1.5 dB typ., ± 1.8 dB max.
Phase noise (Exceeds Intelsat's standard IESS308/309)	-53 dBc/Hz max. @ 10 Hz
	-63 dBc/Hz max. @ 100 Hz
	-73 dBc/Hz max. @ 1 KHz
	-83 dBc/Hz max. @ 10 KHz
	-93 dBc/Hz max @ 100 KHz
	-113 dBc/Hz max @ 1 MHz
Noise power density	
Transmit	-66 dBm/Hz (max)
Receive	-157 dBm/Hz (max)
FSK	Multiplexed on TX IFL, compatible with Comtech and Paradigm
M&C Interface	RS-232, RS-485 and Ethernet (HTTP and SNMP ver. 3)
Noise figure	15 dB max
Input V.S.W.R.	1.5 : 1 max
Output V.S.W.R.	1.5 : 1 max.
Mute	Shut off the HPA if L.O. unlocked
Status LED	
RED	Summary alarm
GREEN	All OK
YELLOW	All OK standard L.O. 13.05 GHz
YELLOW blinking	All OK extended L.O. 12.80 GHz
Temperature range (ambient)	
operating	-40 deg C to +55 deg C
storage	-55 deg C to +85 deg C
Vibration and shock	Complies with MIL-STD-810E
Dimensions & housing	140 (L) x 120 (W) x 69.5 (H) mm 5.51" (L) x 4.72" (W) x 2.78" (H)
Weight	1.2 kg (2.6 lbs) max